

# The marching field is perfect for TSS.

“Half the weight. ALL the tension.” – This was TSS’s first revolution. These unique tunable drums without the shell are now available in Standard Tension (an entry-level model), Extended Tension (suitable for higher tension demands), and Maximum Tension (ideal for Pipe drum rigors.) This means more schools and corps can get equipped, and students can get started earlier. Match their remarkably small size with new racks and harnesses and you can basically create any marching set-up imaginable while still staying surprisingly lightweight. And you’ll be amazed at the sound quality and projection levels of these instruments. The playing field hasn’t been levelled. It’s been obliterated.



**Hurricane Snare**  
EXTENDED RANGE TSS  
8" X 14" SHELL  
with wire snares  
TS-4114-70



**Tornado Snare**  
MAXIMUM RANGE  
10" X 14" SHELL  
with Gut tone snares  
TS-4214-70

**Accent Drum Mounting Bracket**  
For attaching Accent Snare to free floating snare  
HK-8110-00



**Adjustable Accent Snare Mounting Bracket**  
For attaching Accent Snare to Tom Rail  
Remo / Pearl MH-30SN-PL Yamaha MH-30SN-YA

## SDS - Snare Drum System

Incorporating an 8", 10" or 12" Extended Range Tunable Sound Shape, the SDS uses a unique rail-adjusting snare system underneath the top head. The 8" and 10" drums can be used as add-on snare drums for marching, drumset use or as a regular snare drum. Incorporate the "pressure plate" and foam disc and practice quietly for hours. The 12" drum can be used for practicing brushes.

### Extended Range SDS

- |     |            |  |
|-----|------------|--|
| 8"  | TS-0108-DS | (Includes Snare Drum, Accessories and standard |
| 10" | TS-0110-DS | COATED AMBASSADOR® head)                       |
| 12" | TS-0112-DS |  |

### SDS Conversion Kit

- |                                      |            |
|--------------------------------------|------------|
| Muffling and accessories for 8" TSS  | HK-DS08-00 |
| Muffling and accessories for 10" TSS | HK-DS10-00 |
| Muffling and accessories for 12" TSS | HK-DS12-00 |

## TDE - Total Drumming Experience

New this year, check out TDE – the Total Drum Experience. With the lightweight compactness of TSS we’ve added true versatility. Incorporating a 10" or 12" Max Range TSS, the TDE uses a unique rail-adjusting snare system underneath the top head. The drum can be used as a lightweight stand alone snare drum incorporating a drop-in "platform" that will connect directly to a carrier. Without the "platform", the drum can be used as a stand alone snare drum for band or drumset playing. Set-up TSS with a base attachment on a practice stand and use TSS as a practice pad. Add the foam disc and practice for hours while hardly making a sound.

### Maximum Range TDE

- (Includes Snare Drum, Platform, Accessories and standard BLACK MAX® head)
- |     |            |     |            |
|-----|------------|-----|------------|
| 10" | TS-1010-TD | 12" | TS-1012-TD |
|-----|------------|-----|------------|

### TDE Conversion Kit

- |   |            |
|---|------------|
| Platform, muffling, and accessories for 10" TSS | HK-TD10-00 |
| Platform, muffling, and accessories for 12" TSS | HK-TD12-00 |

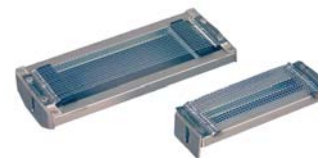
### Universal J-Hook Connecting Brackets

- Left and Right HK-2445-00



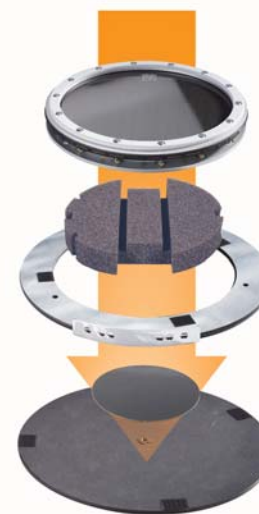
**TSS High Tension Accent Snare with Black Max® drumhead and snare wire**

- |     |            |
|-----|------------|
| 6"  | TS-1006-SN |
| 8"  | TS-1008-SN |
| 10" | TS-1010-SN |
| 12" | TS-1012-SN |
| 14" | TS-1014-SN |



### TSS Snare Wire

- |     |            |
|-----|------------|
| 6"  | HK-SN06-00 |
| 8"  | HK-SN08-00 |
| 10" | HK-SN10-00 |
| 12" | HK-SN12-00 |
| 14" | HK-SN14-00 |



## TSS - Any way you want it.

Set-ups available in the TSS system.

STANDARD RANGE	EXTENDED RANGE	MAXIMUM RANGE
 T3-0802-00	 T3-0802-10	
<b>TRIO (6", 10", 12")</b>		
 T4-6802-00 (6",8",10",12")	 T4-6802-10 (6",8",10",12") T4-8024-10 (8",10",12",14")	 T4-6802-20 (6",8",10",12") T4-8024-20 (8",10",12",14")
<b>QUADS</b>		
 T5-8024-00	 T4-6802-1A (6",8",10",12") T4-8024-1A (8",10",12",14")	 T4-6802-2A (6",8",10",12") T4-8024-2A (8",10",12",14")
<b>QUADS PLUS ACCENT SNARE</b>		
 T5-8024-00	 T5-8024-10	 T5-8024-20
<b>QUINTS (6", 8", 10", 12", 14")</b>		
 T5-8024-00	 T5-8024-1A	 T5-8024-2A
<b>QUINTS (6", 8", 10", 12", 14") PLUS ACCENT SNARE</b>		

## TSS Snare and Multi-Tom Carriers

Aluminum T-bar Snare carrier with aluminum belly plate  
MC-1000-00

Aluminum T-bar Multi-Tom carrier with aluminum belly plate  
MC-1100-00

Tubular aluminum Snare carrier with aluminum belly plate  
MC-1200-00

Tubular aluminum Multi-Tom carrier with aluminum belly plate (not shown)  
MC-1300-00



## Straight Cut Acousticon Shell

- Black or White Quadura finish w/ Black Interior
- |          |            |
|----------|------------|
| 8" X 3"  | 54-0308-XX |
| 10" X 3" | 54-0310-XX |
| 12" X 3" | 54-0312-XX |
| 14" X 3" | 54-0314-XX |

## Cut-a-Way Acousticon Shell

- Black or White Quadura finish w/Black Interior
- |            |            |
|------------|------------|
| 6" X 9.5"  | 54-1906-XX |
| 8" X 9.5"  | 54-1908-XX |
| 10" X 9.5" | 54-1910-XX |
| 12" X 9.5" | 54-1912-XX |
| 14" X 9.5" | 54-1914-XX |

# about to be unleveled.

**TSS STANDARD  
COATED AMBASSADOR®**

- 6" TS-0006-00
- 8" TS-0008-00
- 10" TS-0010-00
- 12" TS-0012-00
- 14" TS-0014-00

ALSO AVAILABLE WITH SNARES



**TSS EXTENDED  
COATED AMBASSADOR®**

- 6" TS-0106-10
- 8" TS-0108-10
- 10" TS-0110-10
- 12" TS-0112-10
- 14" TS-0114-10

ALSO AVAILABLE WITH SNARES



**TSS MAX  
BLACK MAX®**

- 6" TS-1006-10
- 8" TS-1008-10
- 10" TS-1010-10
- 12" TS-1012-10
- 14" TS-1014-10

ALSO AVAILABLE WITH SNARES



Add more snap and crackle to your pop.



TSS can add sound dimension to your drumset that you never imagined. As a dynamic accent, TSS adds a crack that will open a whole new world of sound possibilities. Its rugged Acousticon® frame looks handsome in its high-tech finish and will stand up to the rigors of practice and performance.



TSS Universal  
Mounting Bracket

- |                   |            |
|-------------------|------------|
| Fits 6" TSS drum  | HK-UM06-00 |
| Fits 8" TSS drum  | HK-UM08-00 |
| Fits 10" TSS drum | HK-UM10-00 |
| Fits 12" TSS drum | HK-UM12-00 |
| Fits 14" TSS drum | HK-UM14-00 |

Replacement Drumheads



New this year, we offer many of Remo's original heads for replacement heads: Clear and Coated Diplomat®, Ambassador® and Emperor® drumheads, as well as Renaissance®, Pinstripe®, Suede® Emperor®, Black Max®, White Max®, CyberMax®, and Powerstroke®3 to name a few.

*Lightweight. Compact. Versatile.*



28101 Industry Drive, Valencia, CA 91355

www.remo.com

# TSS™

*Defining Moments in Drum History*

