



WORLD PERCUSSION

REMO Drum Maintenance & Tuning Tips

remo.com



Maintenance & Tuning Tips

For REMO® Drums

Table of Contents

CLEANING	3
CARE	3
ABOUT DRUMHEADS	4
CHANGING YOUR DRUMHEAD	4
1) Removing the old drumhead	5
2) Installing the new drumhead	6
TUNING YOUR DRUM	6



Maintenance & Tuning Tips

For REMO® Drums

CLEANING YOUR DRUM

Our synthetic heads and finishes are moisture resistant and can be cleaned with a soft cloth dampened with:

- Mild hand soap and water
- A Windex type glass cleaner

Nothing too abrasive should be used. For example do NOT use:

- Steel Wool
- Scouring Powder
- Scrub Sponge

After cleaning with an appropriate cleanser we recommend wiping the surfaces a 2nd time with a rag or sponge dampened with clean water.

CARE

Remo drums are very durable, but like any other musical instrument, they require some care. Here are a couple of things we recommend.

- As a rule, don't leave your drum outside overnight, or all day. We make our drums out of materials that are weather resistant, so although you can play them outdoors and even in the rain for a short while, we don't recommend extended exposure to the elements.
- Store your drum where the temperature will remain moderate. We don't recommend storing drums in extreme heat or cold for extended periods.



Creative Drum Storage



Maintenance & Tuning Tips

For REMO® Drums

ABOUT DRUMHEADS

REMO Synthetic Drumheads:

Remo drumheads are made with synthetic materials and have a number of advantages over traditional animal skin drumheads. REMO drumheads are:

- **Weather Resistant** – sound great in all kinds of weather.
- **Child- Friendly** – they are durable and can be wiped clean with a moist cloth.
- **Easy Tuning** – REMO drumheads have been designed for easy tuning.
- **Easy Maintenance** – Changing our drumheads is a snap; and takes only minutes!

Animal Skin Drumheads:

Traditionally, ethnic drumheads such as djembe and conga heads are made with animal skins. There are three main drawbacks to animal skin drumheads:

- They are very sensitive to moisture, which can cause the sound of the drum to drop in pitch.
- In hot, dry weather the skin will tighten causing the pitch to go up; and, as a result, can sometimes tear.
- Animal skin drumheads require some expertise to install, the process usually takes two or three days.

• **Environmentally Responsible** – REMO uses recycled materials in the production of many REMO drum shell products. In fact REMO is a seven-time recipient of the California WRAP Award for waste reduction. No animals are harmed in the production of our drumheads.

CHANGING YOUR DRUMHEAD

If you have a tunable Remo drum, you will want to change the drumhead at some point, either because the head is damaged, or because it no longer has your desired sound. The drumheads will fatigue after being played over a long period of time, so if you feel that your drum isn't as lively as it used to be, and you've tuned it up to try to revive it, it may be time to replace the drumhead.

Follow the simple steps on the following page.



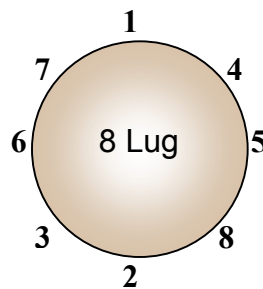
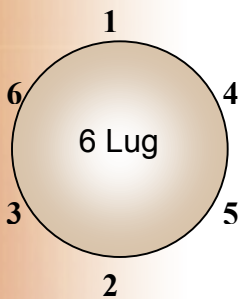
Maintenance & Tuning Tips

For REMO® Drums

1) Removing the old drumhead

Start by using the tuning key (See Figure MT.4) to loosen ALL the threaded drum rods about 1/2 to 1 turn at a time in a counter-clockwise direction, following the pattern shown in the illustration below, until they can be removed. (You will use this same pattern when tightening the head. Choose either the pattern for 6 or 8 lugs depending on your drum).

(Figure MT.1)



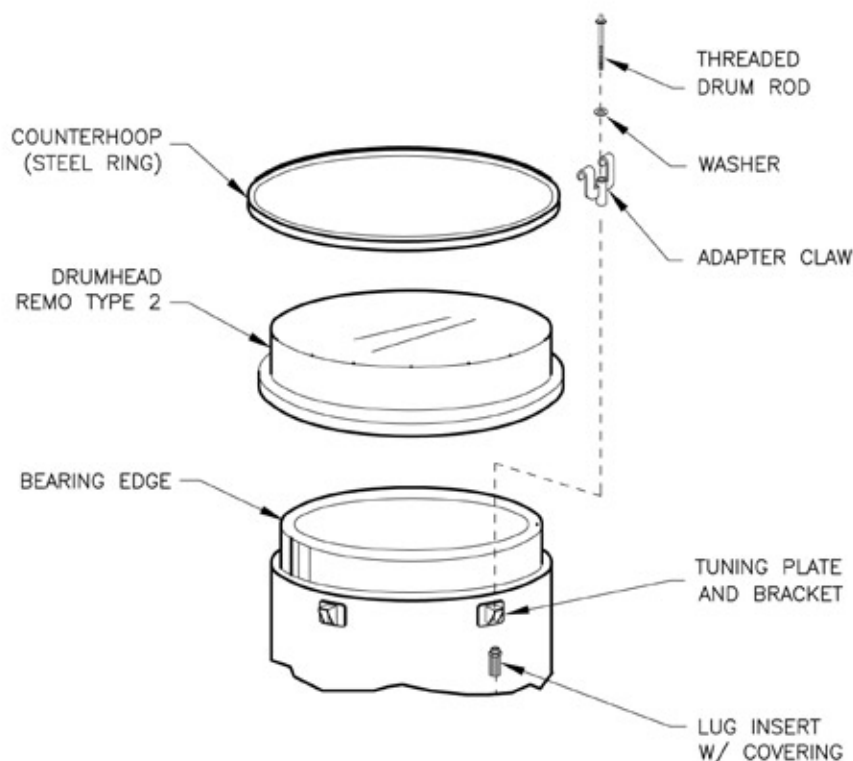
(Figure MT.2)



Remove all the threaded drum rods, adapter claws, etc., and lay them aside. Remove the drumhead and the hoop that holds down the head (this is called the “counterhoop”).

- Note: If the rods have grease on them, place them in a Ziploc or plastic bag until ready to install so they do not stain anything.

(Figure MT.3)





Maintenance & Tuning Tips

For REMO® Drums

2) *Installing the new drumhead*

Using a dry rag, wipe off the top of the drum shell where the old drumhead had been - this is called the “bearing edge” because it bears the tension of the drumhead (*See Figure MT.3*). Lubricate threaded rods & lug inserts with a small amount of grease, oil, or silicone spray to make tuning easier & reduce the possibility of rust.

Place the new head on the drum and make sure it rests on the bearing edge and place the counterhoop back on the drumhead. Reinstall all the threaded drum rods, adapter claws, etc. (*See Figure MT.3*)

TUNING YOUR DRUM

Using your fingers, begin tightening the head in the same pattern used to remove the head. When the threaded drum rods (*Figure MT.2*) are too tight to use your fingers any longer, begin using the swivel tuning key (*Figure MT.4*) and turn 1/2 to 1 full turn in a clockwise direction following the tuning pattern all the way around until the drum begins to sound right to you. **Note:** the more you turn the drum rods in a clockwise direction, the tighter the head will become and the higher the pitch will be.

How high or how low you tune your drum is entirely up to you. Listen to your friends' drums, and drums you hear on recordings. We encourage you to experiment with tuning; remember if you don't like it you can always change it!

(Figure MT.4)



Warning: Over tightening a single drum rod without following the proper sequence can result in damage to the drumhead and/or hardware. Please be careful to follow the proper tuning sequence. *See Figure MT.1*